



### 億來製網股份有限公司

秉持「品質第一、信譽第一及精益求精」的信念，專營各種金屬板沖孔網、砂石篩選網、隔音牆吸音網、線槽用網、裝飾網、壓花板、喇叭網、機器及飼料用網之製造加工，從諮詢、設計至製造之服務。

本公司自成立以來業務成長迅速、需求多樣化、產品不斷的推陳出新，以生產高品質的產品來服務客戶。

面對日新月異的不斷挑戰，本公司配合尖端的電腦科技，以符合業界高水準的要求，我們也配合潮流的發展，並且創造新的契機，根據我們所擁有的產品及技術，搭配我們可以提供的服務及模式，創造出我們與其他相關業界不同的特點：



1. 提供客製化的經驗及產品，並且配合客戶需求改良。
2. 配合新製程或新需求，提供研發及設計的相關服務。
3. 不斷改良及創新產品的效果及項目。
4. 結合相關的後續產業及產品運用的整體設計。

堅持穩健精營、品質優良的產品，並以全套服務系統（售前服務、策劃、製造及售後服務）與客戶全程配合，準時交貨，強化品質及效率是**億來製網股份有限公司**做為對客戶的堅定承諾。



# 公司簡介 Introduction Company

# YI LAI



專業製造加工

金屬板沖孔網

各種砂石篩選網

隔音牆吸音網

線槽用網

裝飾網

壓花板·喇叭網

機器及飼料用網





## 生產項目 MAIN PRODUCTS

各種金屬沖孔網，製造加工：用於機械網過濾網，篩選網，隔音牆吸音網，汽、機車消音網，空氣濾清網，各航空站，大樓之線槽網路金屬網，音響喇叭網，裝璜，家具，五金，用網，及各種金屬擴張菱形網，而適用製網材質為：不鏽鋼板，鋁板，鐵板，鋼板，鍍鋅板，銅板，等各類金屬或PVC板。

Meshes for bleaching and dyeing machines, filters, decorations, ventilation, machine protective devices, dehydraters, sound proof devices, waste gas filters, sewage filters, dust collectors, and central air-conditioning systems.

### 材料選用：

- (1) 熱扎鋼板：SS41
- (2) 冷扎鋼板：SPCC-SD
- (3) 不鏽鋼板：SUS304
- (4) 不鏽鋼板：SUS316
- (5) 鍍鋅鋼板：SPG
- (6) 鋁板：AL
- (7) PVC板：PVC

### MATERIAL USING:

- (1) Hot rolled steel sheet:SS42
- (2) Cold rolled steel sheet:SPCC-SD
- (3) Stainless steel sheet:SUS#304
- (4) Stainless steel sheet:SUS#316
- (5) Galvanized steel sheet:SPG
- (6) Aluminum steel sheet:AL.
- (7) PVC sheet:P.V.C.

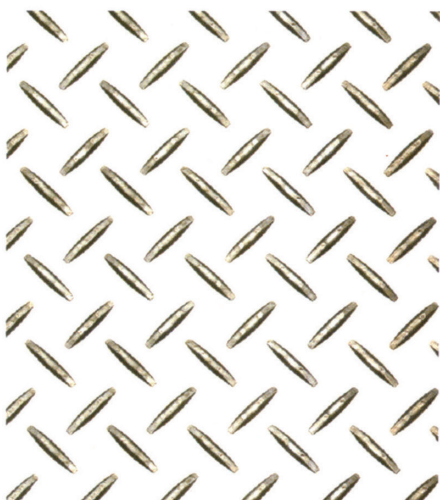
### 加工範圍：

- (1) 材料：任意
- (2) 面積：5.0米×2.4米 或 鋼卷長×寬1.2米長度不受限制
- (3) 標準面積：5'×10'
- (4) 厚度：0.3毫米~19毫米
- (5) 孔徑Ø：0.5毫米~200毫米
- (6) 孔距：任意
- (7) 開孔率：任意
- (8) 余邊：任意

### PROCESSING SUMMARY:

- (1) Material：Per your requirement
- (2) Size limits：(L) 5.0M×(W) 2.4M or (L) Roll-steel sheet×(W) 1.2M no limit on length
- (3) Standard size：(L) 2440m/m×(W) 1220m/m
- (4) Thickness：0.3m/m~19m/m
- (5) HoleØ：0.5m/m~200m/m
- (6) Pitch：Per your requirement
- (7) Open area：Per your requirement
- (8) Sidelines：Per your requirement

## 主要產品 MAIN PRODUCTS



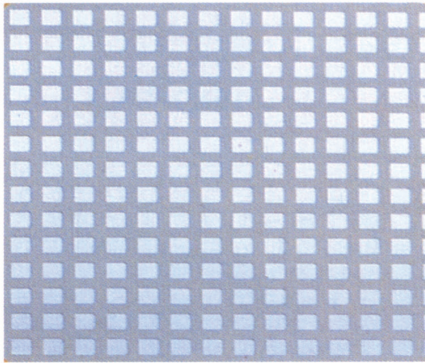
花紋止滑板 (Texture slide-proof plate)



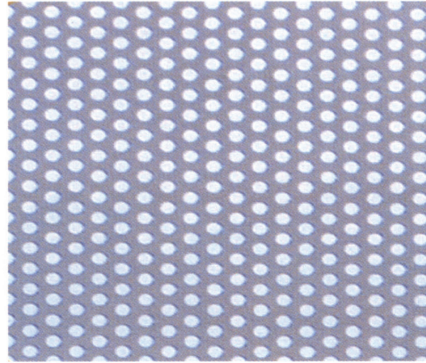
高速公路隔音牆實景圖 (Highway sound insulation wall)



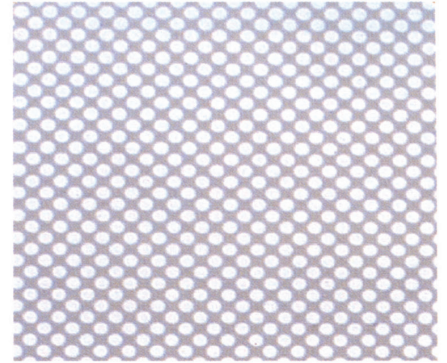
# 主要產品 MAIN PRODUCTS



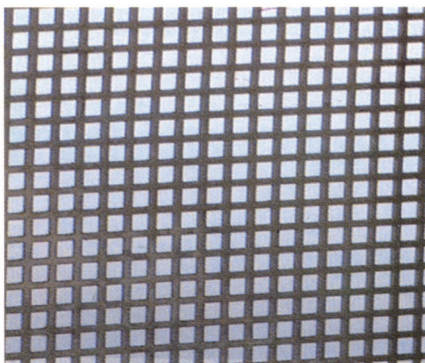
YL-1



YL-2



YL-3



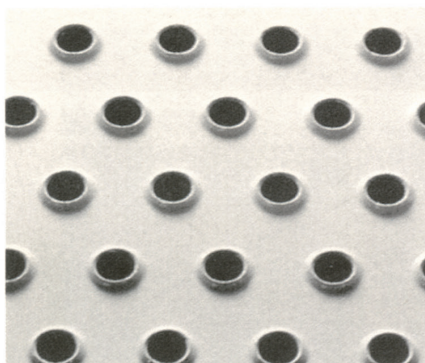
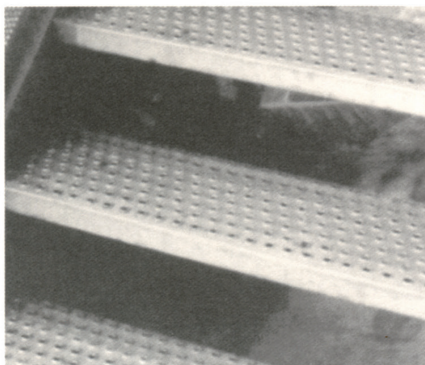
YL-4



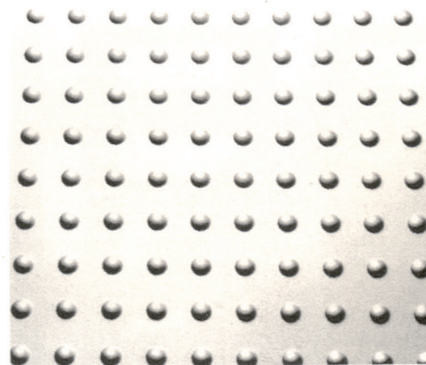
YL-5



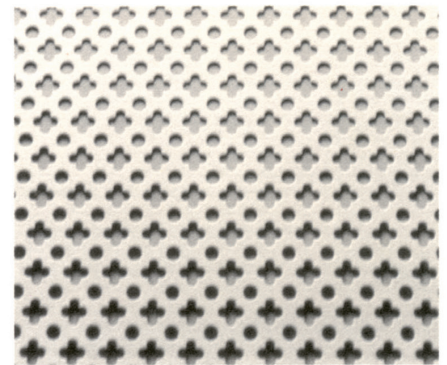
YL-6



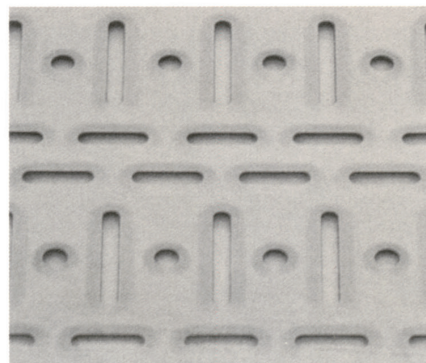
YL-9



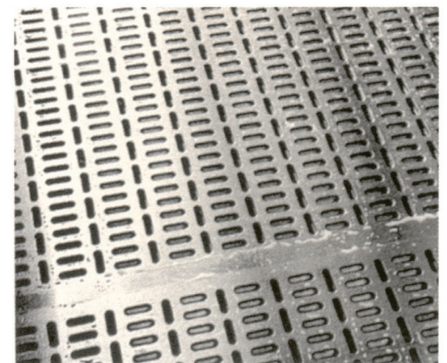
YL-7



YL-8



YL-10



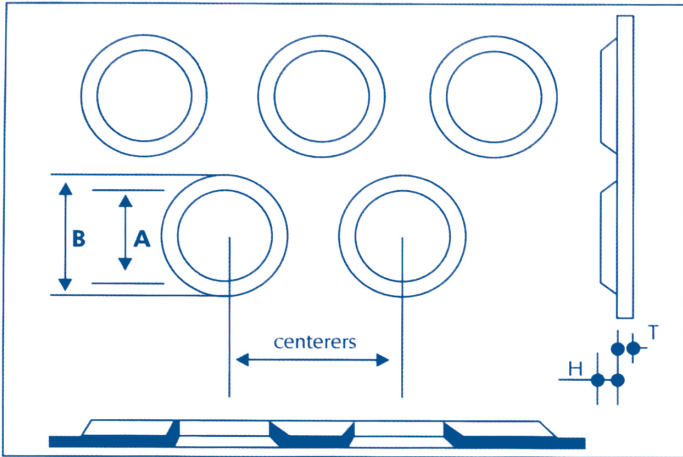
YL-11





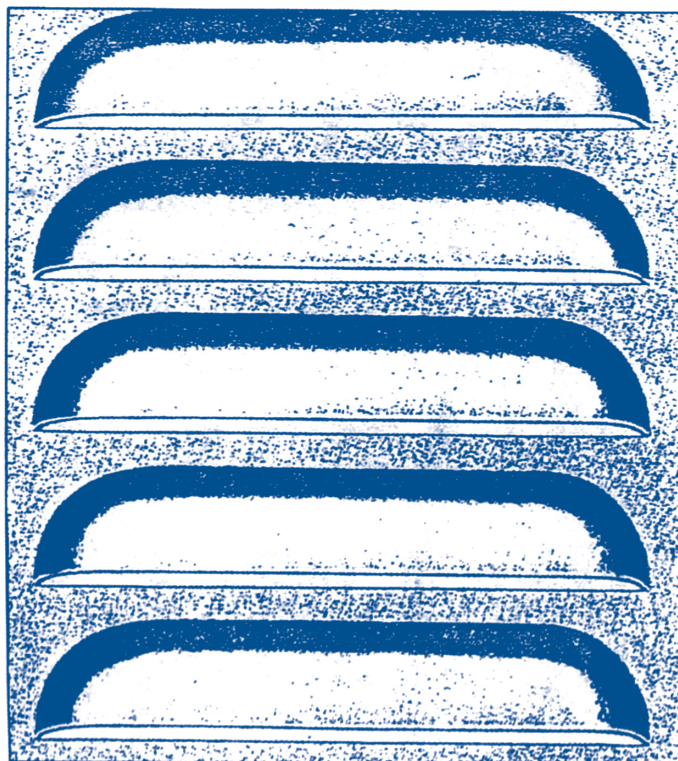
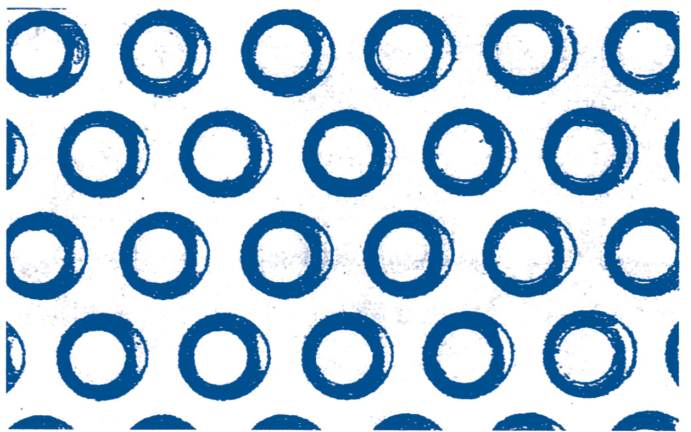
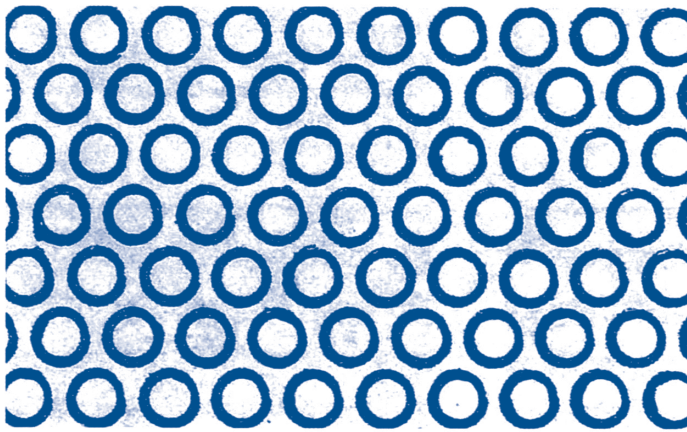
## 產品用途 MAIN PRODUCTS

### 魚目孔 (凸孔)

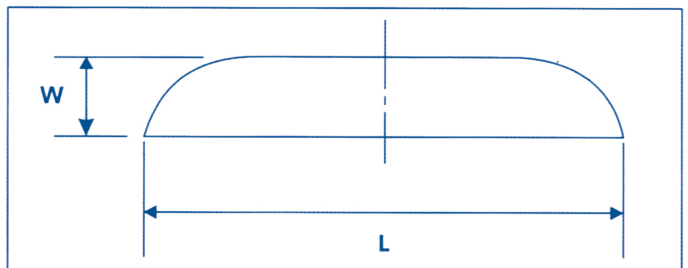


No.	A	B	centers	H	T
B-1	6Ømm	13.8Ømm	20	2-3	1.0-1.2
B-2	9Ømm	25Ømm	任意/ANY	2-3	0.8-1.0
B-3	10.8Ømm	16Ømm	24	2-3	0.8-1.0
B-4	13Ømm	18Ømm	25	2-3	2.3-3.2
B-5	13Ømm	20Ømm	25	2-3	1.6-2.0
B-6	14.5Ømm	18Ømm	24	2-3	0.8-1.2

### 接縫孔 (Burred perforation)



### 通風窗 (Louvers) 羽板窗 (Fixed louvers)

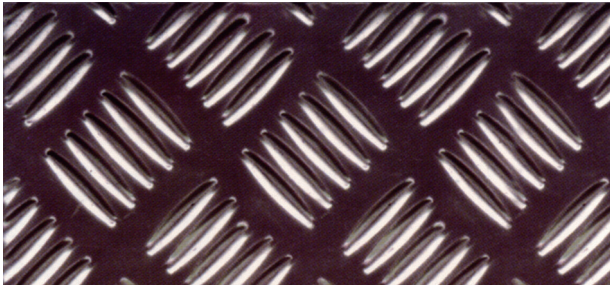


No.	W	L	Size	T
L-1	10mm	30mm	任意/ANY	1.0
L-2	10mm	50mm	任意/ANY	1.0-1.2
L-3	15mm	60mm	任意/ANY	1.0-1.2
L-4	15mm	70mm	任意/ANY	1.0-1.6
L-5	15mm	80mm	任意/ANY	1.0-1.6
L-6	15mm	100mm	任意/ANY	1.6-2.0
L-7	20mm	100mm	任意/ANY	1.6-2.0
L-8	20mm	120mm	任意/ANY	1.6-2.0
L-9	20mm	190mm	任意/ANY	1.6-2.0

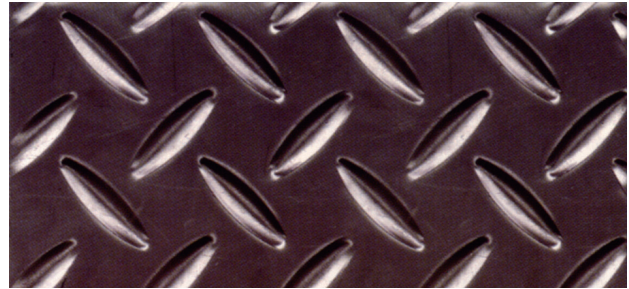
### 標準尺寸 (Standard size) 通風孔



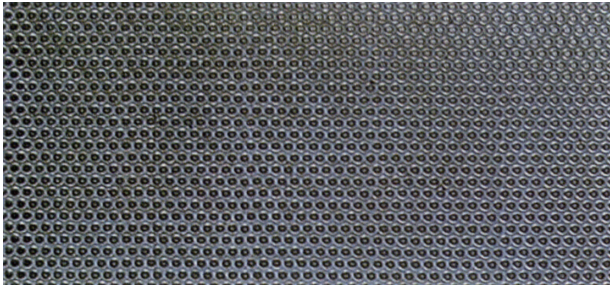
# 產品用途 MAIN PRODUCTS



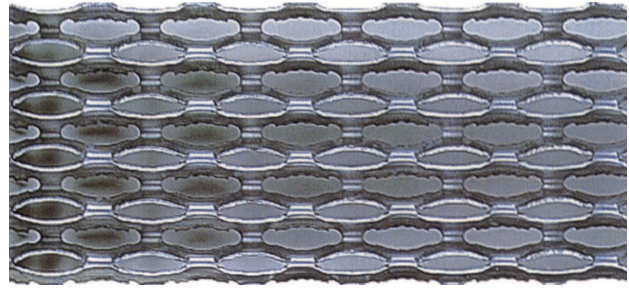
**YL-12**



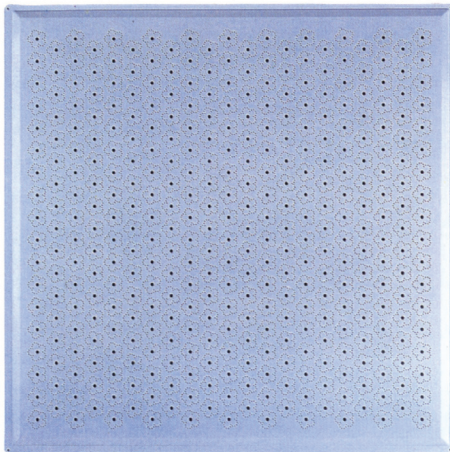
**YL-13**



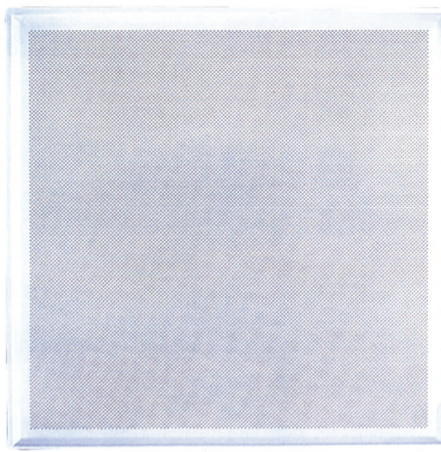
**YL-14**



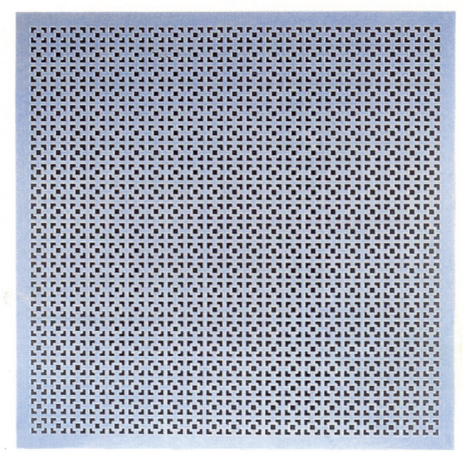
**YL-15**



**YL-16** 梅花型天花板  
Plum blossom type ceiling



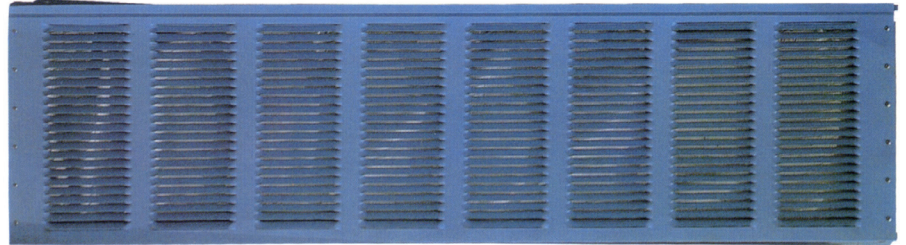
**YL-17** 0.2×P0.9開孔率21%  
(0.2×P0.9 openness21%)



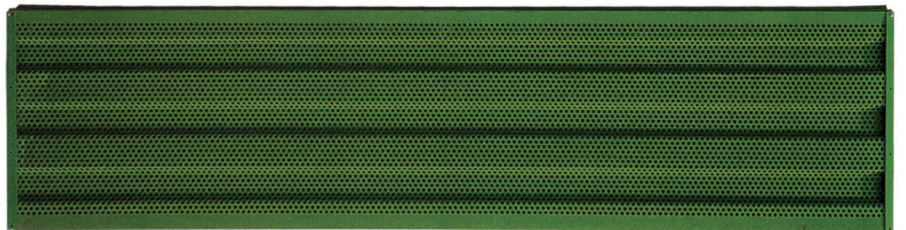
**YL-18** 25×25天花板  
(25×25 ceiling)



20×P5×45"天花板  
(20×P5×45" ceiling)



**YL-19** 百葉型  15×190隔音網  
(Venetian blind-type  15×190 soundproof meshes)

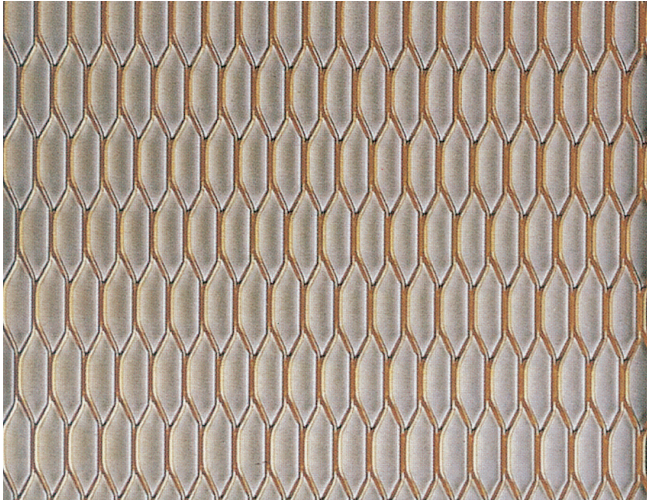


**YL-20** 80×P10隔音板開孔率45%  
(80×P10 Soundproof plate with opening ratio 45%)

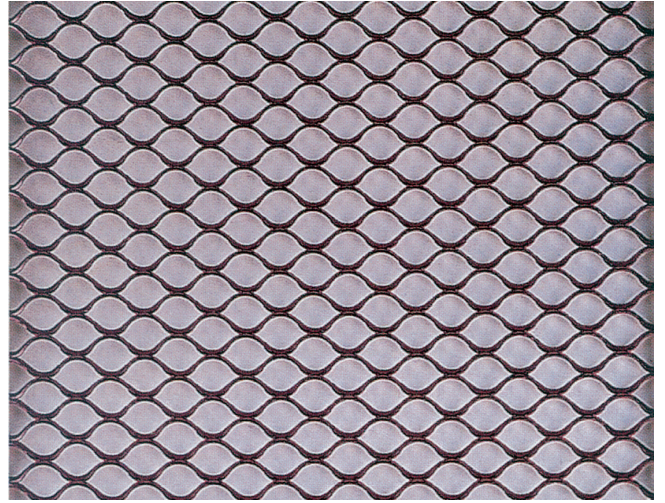




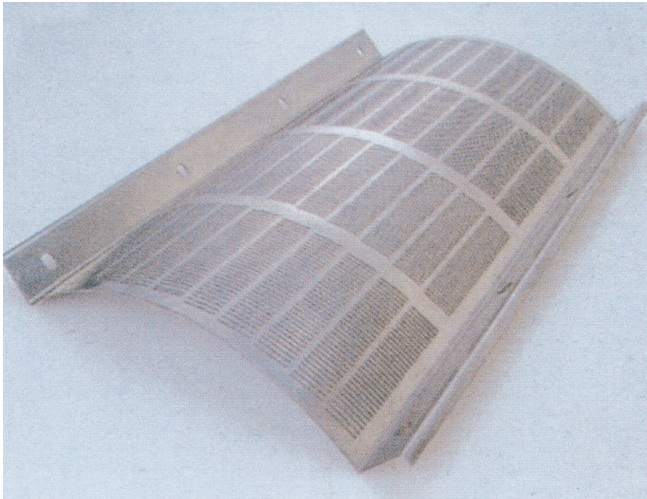
產品用途 **MAIN PRODUCTS**



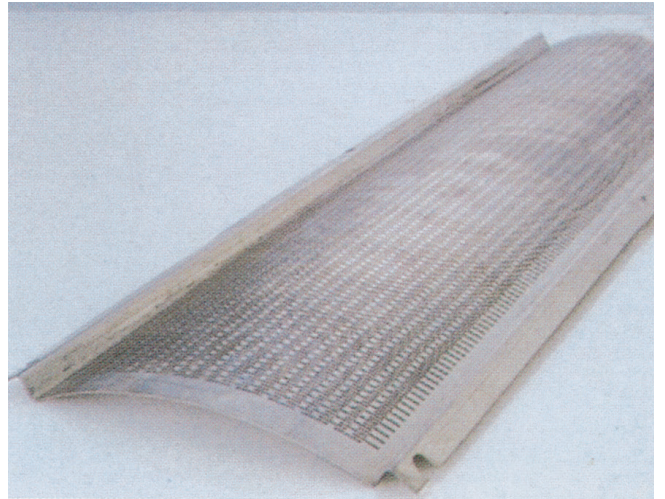
**YL-21**



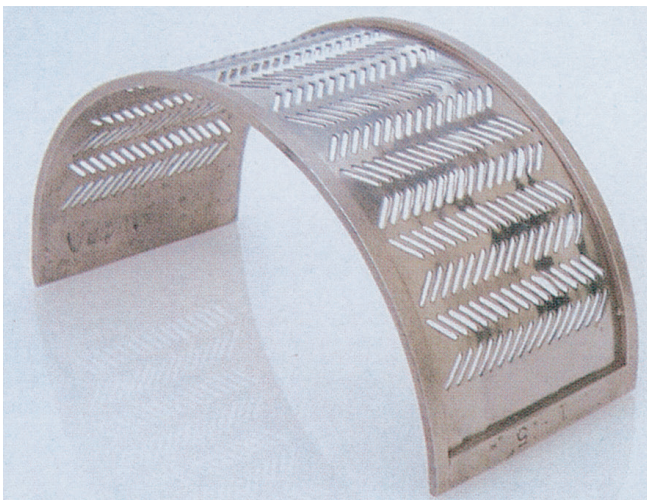
**YL-22**



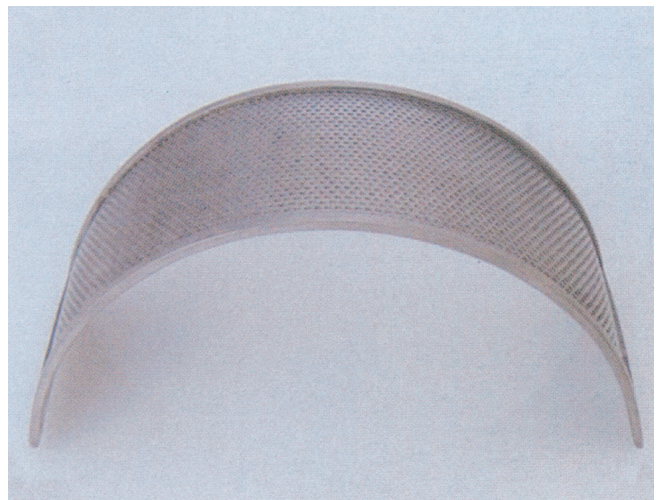
**YL-23**



**YL-24**



**YL-25**



**YL-26**



# 菱形網 EXPANDED METAL

## 前言

擴張金屬菱形網乃運用冷、熱軋網，經冷壓處理製得而成。本產品是菱形、龜甲狀拉網，可確保對來自各種角度壓力的抗張性；因此，在強度的表現、輕便的特性、網孔的種類、安全性、外觀與自動化生產系統方面、皆有優異的表現，且可廣泛適用於公共工程、建築、造船、工廠、鐵路車輛、地板材料等。

擴張金屬是一種經切成條狀的鐵板，擴張成具有同一網孔的網狀物。所有材料在製造過程中均不致耗損，而全部鐵條皆來自原來的鐵板，在連接處都牢固地互相接合。

由於是一體成型，所以本產品不會鬆開或磨損，並且能兼顧裝飾性及耐用性。在任何狀況下，此拉網皆比原本的鐵板更為牢固。

因為擴張金屬的獨特型式，它可以透光或遮光，也可以透氣，並有效阻擋異物的進入。

擴張金屬能使用與應用於各種不同的範疇，新的使用方式也一直層出不窮，因此無法將應用的項目一一完整列出，擴張金屬並未侷限在特定的領域，產業界將它廣泛運用於機械防護、貨架及網架，也使用於各類製造產品及設備；至於在建築產業方面，則包括水泥構築與強化、隔間等類似的運用。

本產品材質為熱軋鋼板或網絲環片，或由類似鋼鐵製成。不過，材質亦可擴及其他具延展性金屬，如鋁、銅和不鏽鋼。

## FOREWORD

Expand metal laths are manufactured through cold rolling by use of hot and cold rolled steel.

They are rhombic and tortoise-shaped meshes, ensuring outstanding tensile strength against stresses given at any angles. Accordingly, they are excellent with respect to strength, light-weight feature, opening rate, security, appearance and automated production system, and are widely employed for public work, building, shipbuilding, manufacturing plants, railroad cars, flooring materials, etc.

Expand Metal is sheet metal that has been slit and expanded into a network of uniform shaped openings. None of the material is lost in the process and the strands are all part of parent metal, rigidly connected at their junctions.

Formed in one piece, it cannot ravel or fray and its distinctive pattern is both decorative and substantial. In many cases, the mesh is more rigid than the parent sheet.

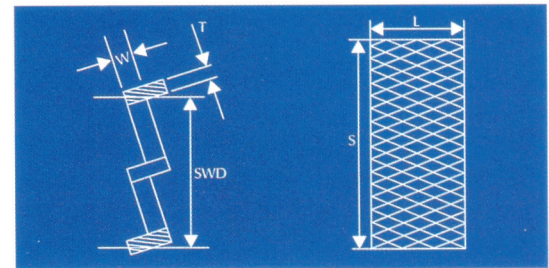
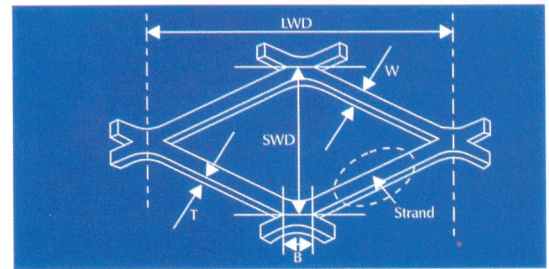
Because of its unique pattern Expanded Metal can be used to admit or obscure light and vision. It will admit ventilation yet form an effective barrier against physical entry.

The uses and applications for Expanded Metal are many and varied and as new uses are constantly being found, it is virtually impossible to provide a complete list of applications.

Expanded Metal is not limited to any field. It is used extensively in industry for machinery guards, shelving pallets and racking.

It is used in manufactured products and equipment of all kinds, and in the building industry for concrete form-work and reinforcement, partitions, room dividers and the like.

The material used in hot rolled steel panel or steel belt sheet, or made by the same steel. However, many other ductile metals such as aluminum, copper, brass and stainless steel can also be expanded.



- SWD : Short way center distance of mesh
- LWD : Long way center distance of mesh
- T : Thickness
- W : Width
- B : Bond Length
- S : Short way length of product (length)
- L : Long way length of product (length)

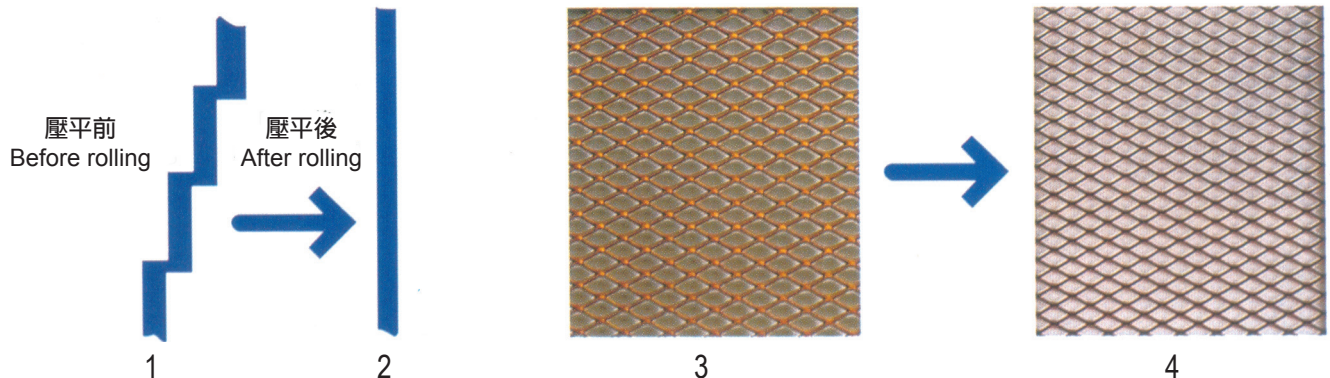
- SWD : 拉網最短中心距離
- LWD : 拉網最長中心距離
- T : 厚度
- W : 寬度
- B : 鍵長
- S : 產品最短距離長度 (長度)
- L : 產品最長距離長度 (寬度)

### 特點

- \* 拉網的壓平製程全程採用標準擴張金屬。
- \* 外型美觀，輕便且耐用。
- \* 節省成本。

### FEATURES

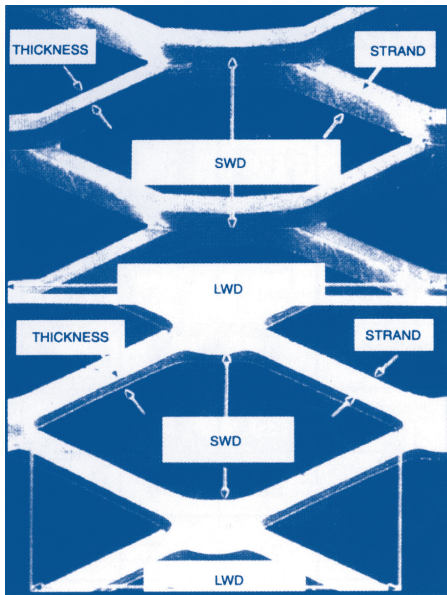
- \* The entire part of the mesh is flattened by processing the standard Expand Metal through skin pass rolling.
- \* Beautiful mesh, light-weight, and sturdy.
- \* Cost-saving.







**菱形網 EXPANDED METAL**



SWD : Short way center distance of mesh

LWD : Long way center distance of mesh

T : Thickness

W : Width

B : Bond Length

S : Short way length of product (length)

L : Short way length of product (width)

SWD : 拉網最短中心距離

LWD : 拉網最長中心距離

T : 厚度

W : 寬度

B : 鍵長

S : 產品最短距離長度 (長度)

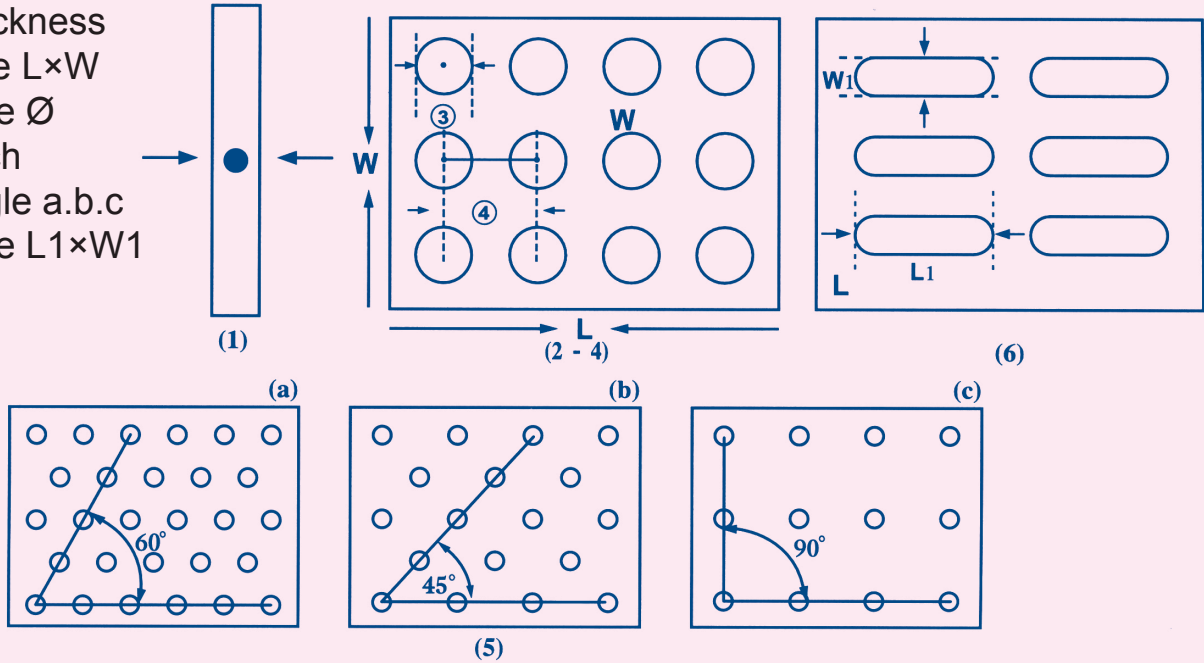
L : 產品最長距離長度 (寬度)

	(CODE)	(SW)	(LW)	(T)	(W)	(4×8)	(5'×10')
	XS-31	12.00	30.50	1.20	1.50	7.01	10.96
	XS-32	12.00	30.50	1.60	2.00	12.50	19.46
	XS-33	12.00	30.50	2.30	3.00	26.80	41.94
	XS-41	22.00	50.80	1.60	2.00	6.78	10.59
	XS-42	22.00	50.80	2.30	2.50	12.20	19.04
	XS-43	22.00	50.80	3.20	3.50	23.80	37.16
	XS-51	25.00	61.00	1.60	2.50	7.46	9.59
	XS-52	25.00	61.00	2.30	3.00	12.90	20.11
	XS-53	25.00	61.00	3.20	4.00	23.90	37.39
	XS-61	34.00	76.20	2.30	3.00	9.48	14.82
	XS-62	34.00	76.20	3.20	4.00	17.60	27.45
	XS-63	34.00	76.20	4.50	5.00	30.90	48.31
	XS-71	50.00	152.4	2.30	3.50	7.52	11.75
	XS-72	50.00	152.4	3.20	4.00	11.92	18.67
	XS-73	50.00	152.4	4.50	5.00	21.02	32.79
	XG-11	34.00	135.4	4.50	7.00	43.10	67.40
	XG-12	34.00	135.4	6.00	7.00	57.70	90.10
	XG-13	34.00	135.4	6.00	9.00	74.00	116.0
	XG-14	34.00	135.4	8.00	9.00	98.70	154.0
	XG-21	36.00	101.6	4.50	7.00	40.70	63.60
	XG-22	36.00	101.6	6.00	7.00	54.40	85.00
	XG-23	36.00	101.6	6.00	9.00	70.10	110.0
	XG-24	36.00	101.6	8.00	9.00	93.30	146.0

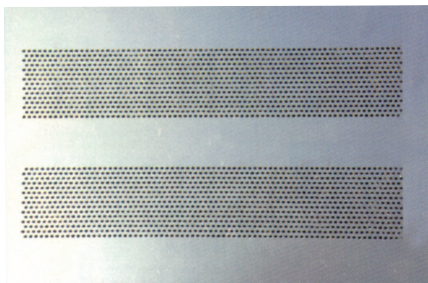


# SPECIFICATION:

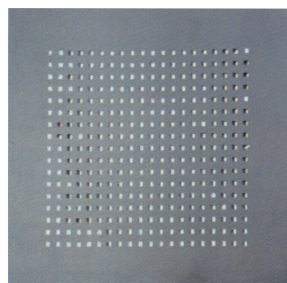
- 1) Thickness
- 2) Size L×W
- 3) Hole Ø
- 4) Pitch
- 5) Angle a.b.c
- 6) Hole L1×W1



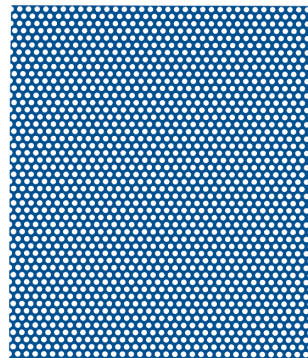
## REGULAR SAMPLE SWATCH



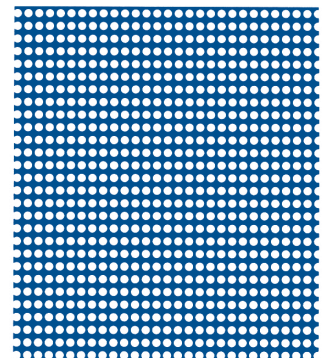
**YL-27** 金屬網板



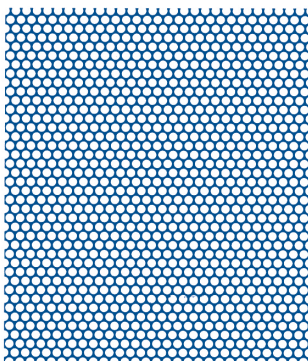
**YL-28** 正方形孔



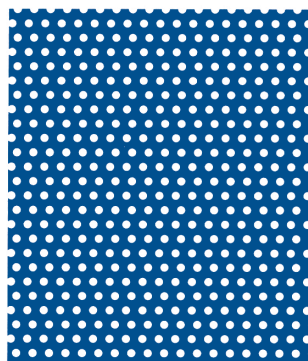
**YL-29** 0.8Ø×1.55P("310)  
.315" diameter  
310 holes per sq.in.  
24.2% open



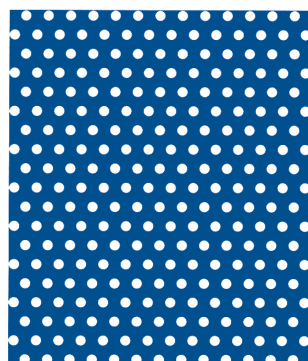
**YL-30** 1Ø×1.5P  
.039" diameter  
.0591" centers,  
34.9% open



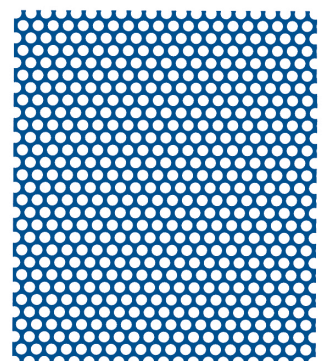
**YL-31** 1Ø×1.5P  
.039" diameter  
.0591" centers,  
40.2% open



**YL-32** 1Ø×2P  
.039" diameter  
.08" centers,  
22.6% open



**YL-33** 1.5Ø×3P  
.059" diameter  
.118" centers,  
22.6% open

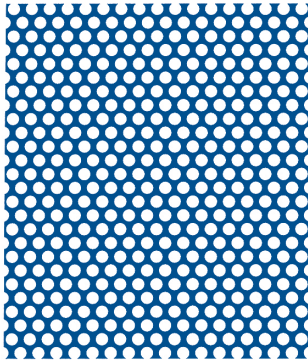


**YL-34** 1.5Ø×2P  
.059" diameter  
.79" centers,  
50.9% open

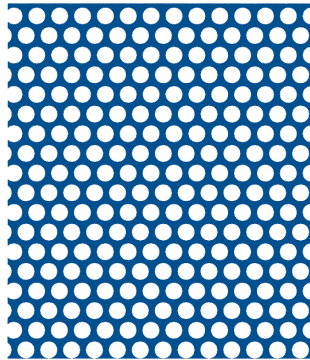




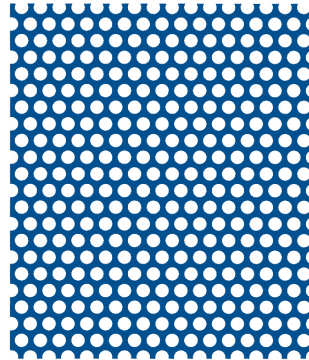
## REGULAR SAMPLE SWATCH



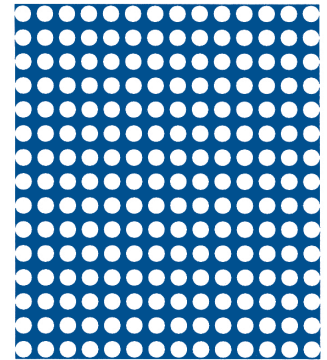
**YL-35** 1.2Øx2.2P  
.047" diameter  
.086" centers,  
26.9% open



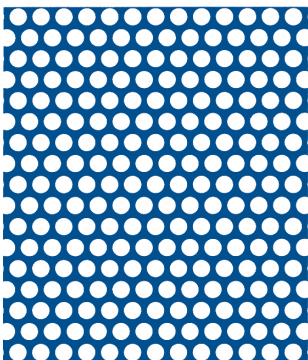
**YL-36** 1.8Øx3P  
.07" diameter  
.118" centers,  
32.6% open



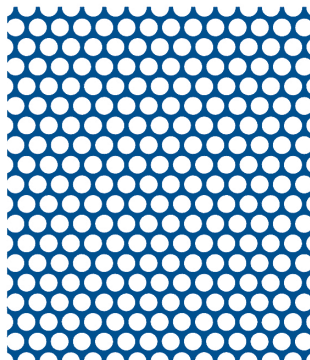
**YL-37** 1.9Øx2.6P  
.075" diameter  
.102" centers,  
48.3% open



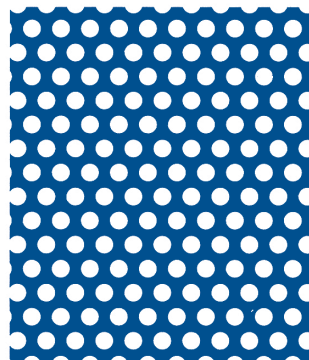
**YL-38** 2Øx3P  
.079" diameter  
.118" centers,  
34.9% open



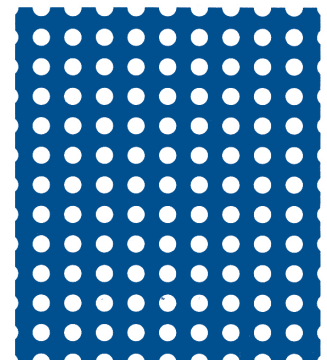
**YL-39** 2Øx3P  
.079" diameter  
.118" centers,  
40.2% open



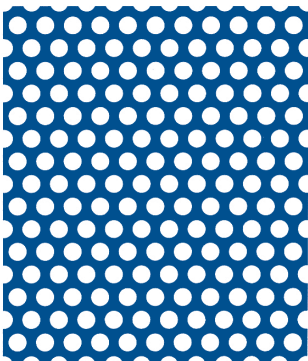
**YL-40** 2Øx2.5P  
.079" diameter  
.098" centers,  
57.9% open



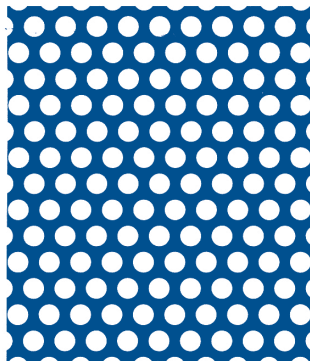
**YL-41** 2Øx3.5P  
.079" diameter  
.138" centers,  
29.6% open



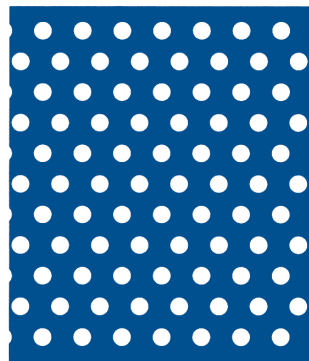
**YL-42** 2Øx4P  
.079" diameter  
.157" centers,  
19.6% open



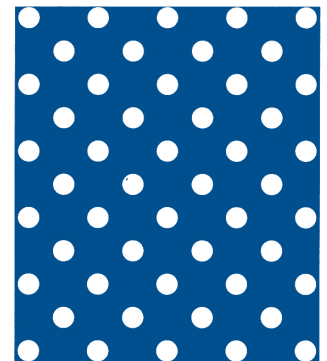
**YL-43** 2.5Øx3.5P  
.0984" diameter  
.138" centers,  
46.2% open



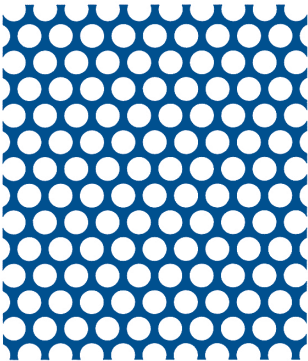
**YL-44** 2.5Øx4P  
.0984" diameter  
.157" centers,



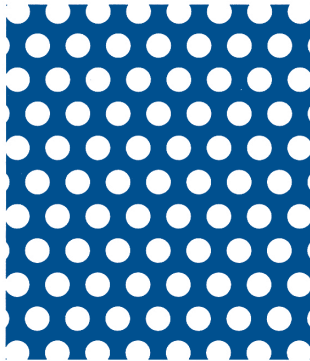
**YL-45** 2.5Øx5P  
.0984" diameter  
.197" centers,  
22.6% open



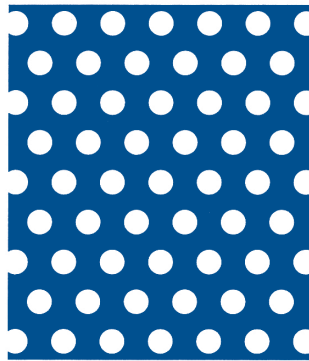
**YL-46** 2.6Øx9P  
.102" diameter  
.354" centers,  
13% open



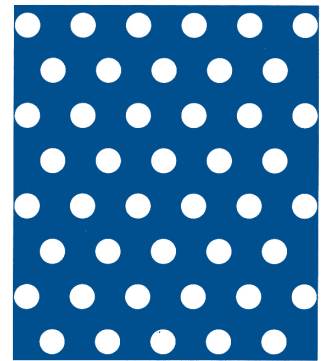
**YL-47** 3Øx4P  
.118" diameter  
.157" centers,  
50.9% open



**YL-48** 3Øx5P  
.118" diameter  
.197" centers,  
32.6% open



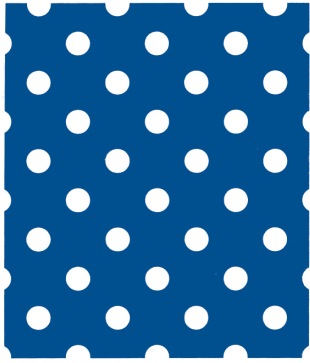
**YL-49** 3Øx6P  
.118" diameter  
.236" centers,  
22.6% open



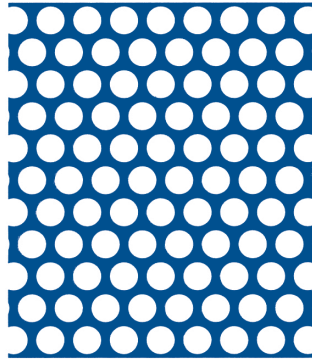
**YL-50** 3Øx7P  
.118" diameter  
.276" centers,  
16.6% open



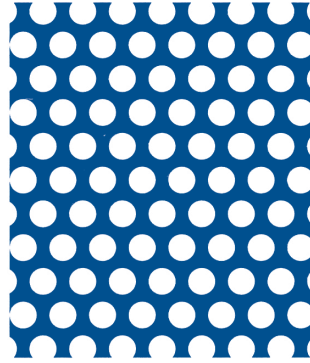
# REGULAR SAMPLE SWATCH



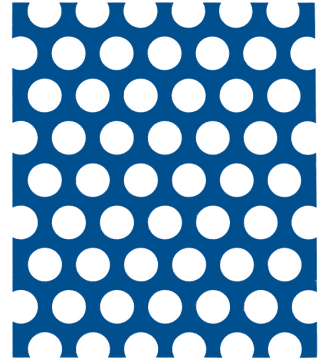
**YL-51** 3Ø×10P  
.118" diameter  
.394" centers,  
14% open



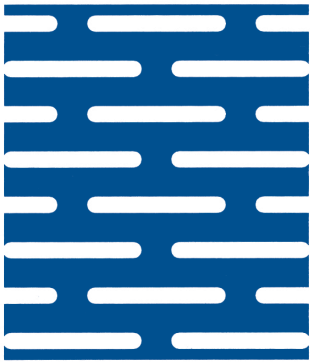
**YL-52** 3.5Ø×5P  
.1378" diameter  
.197" centers,  
44.4% open



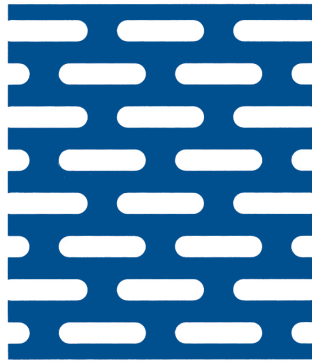
**YL-53** 3.3Ø×5P  
.1299" diameter  
.197" centers,  
39.4% open



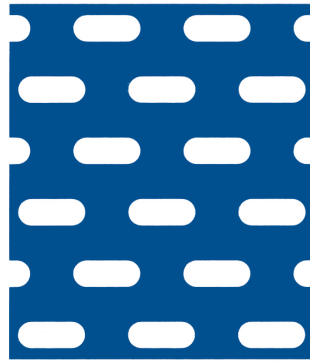
**YL-54** 4Ø×6P  
.157" diameter  
.236" centers,  
40.2% open



**YL-55** 2.5×20  
.098"×.787"  
-23.6% open



**YL-56** 3×12  
.118"×.472"  
-39.3% open



**YL-57** 4×10  
.157"×.394"  
-30.7% open



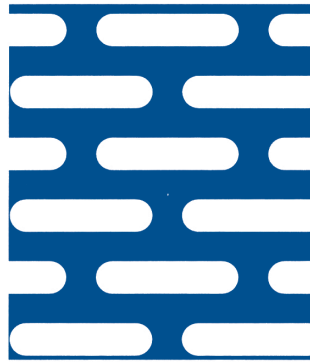
**YL-58** 6×20  
.236"×.787"  
-37.2% open



**YL-59** 11×37  
.433"×1.457"  
-48.9% open



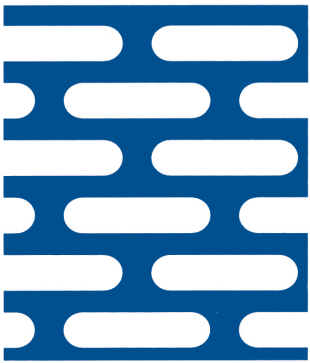
**YL-60** 8×36  
.315"×1.811"  
-44.4% open



**YL-61** 4×20  
.157"×.787"  
-41.2% open



**YL-62** 4.5×24  
.177"×.945"  
-36.9% open



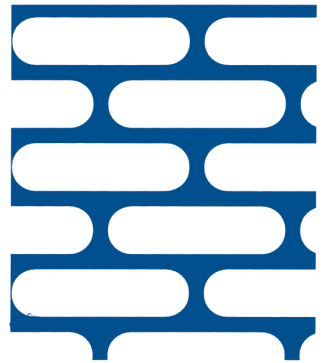
**YL-63** 5×20  
.197"×.787"  
-51.5% open



**YL-64** 6.5×20  
.256"×.787"  
-41.2% open



**YL-65** 7×25  
.276"×.984"  
-41.5% open



**YL-66** 7×26  
.276"×1.024"  
-71.6% open





**REGULAR SAMPLE SWATCH**



**YL-67** 1×25  
.39"×.984"



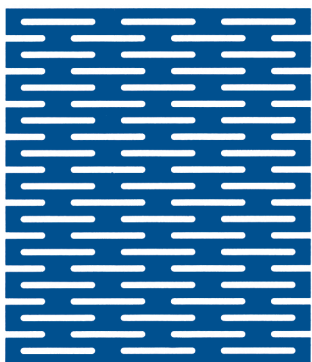
**YL-68** 2.5×24  
.098"×.945"  
-51.2% open



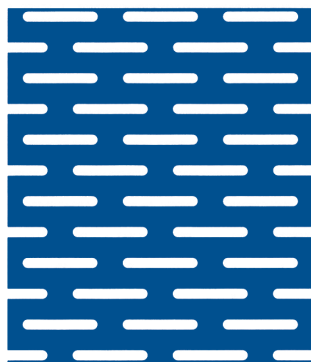
**YL-69** 3.5×21  
.0137"×.827"  
-48% open



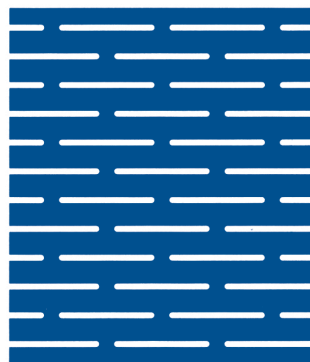
**YL-70** 3.5×21  
.0137"×.827"  
-48% open



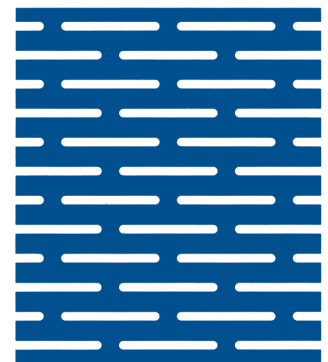
**YL-71** 0.8×10  
.0315"×.394"  
-29% open



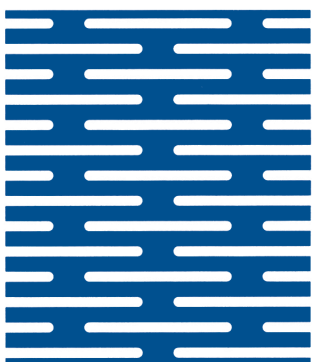
**YL-72** 1×10  
.039"×.394"  
-11.6% open



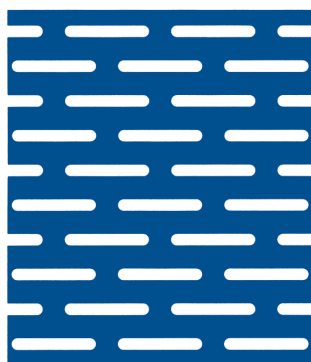
**YL-73** 1×12  
.039"×.472"  
-19.6% open



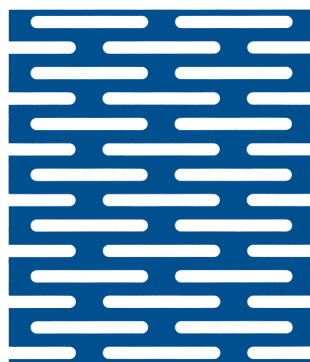
**YL-74** 1×13  
.039"×.512"  
-17.8% open



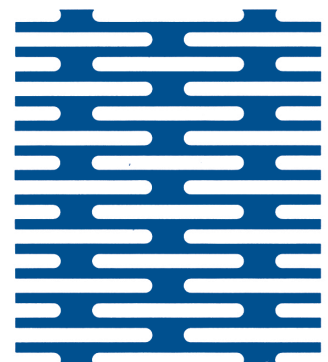
**YL-75** 1.3×20  
.051"×.787"  
-29.4% open



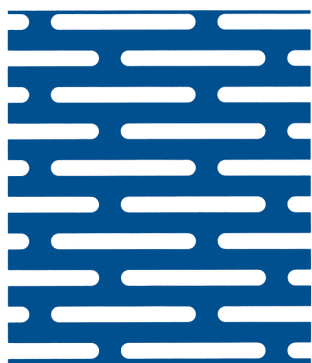
**YL-76** 1.5×11  
.059"×.433"  
-23.1% open



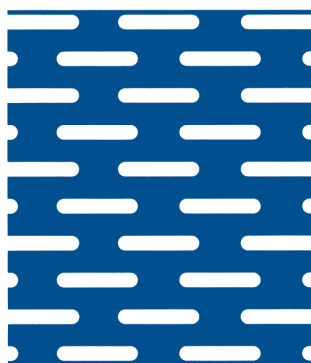
**YL-77** 1.5×15  
.059"×.591"  
-33.3% open



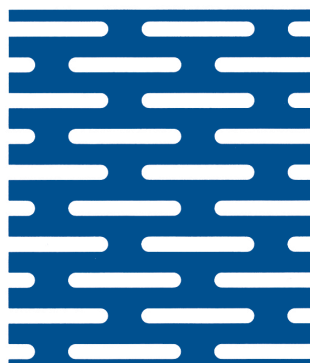
**YL-78** 1.5×20  
.059"×.787"  
-35.3% open



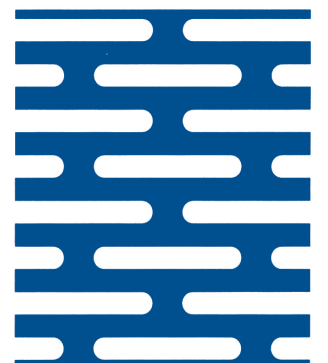
**YL-79** 2×20  
.079"×.787"  
-36.2% open



**YL-80** 2×11  
.079"×.433"  
-27% open



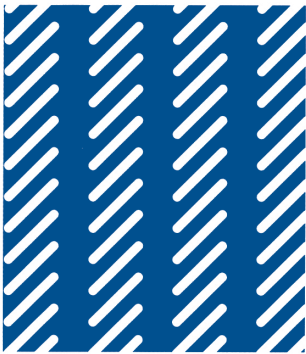
**YL-81** 2×15  
.079"×.591"  
-32.9% open



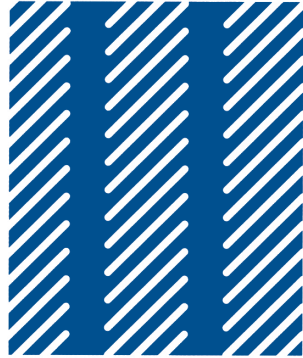
**YL-82** 3×20  
.118"×.787"  
-39.7% open



# REGULAR SAMPLE SWATCH



**YL-83** 1x10  
.039"x.394"



**YL-84** 1x15  
.039"x.591"



**YL-85** 2x24  
.079"x.945"



**YL-86** 3.5x30  
.137"x1.181"



**YL-87** 3x12  
.118"x.472"



**YL-88** 2.5x12  
.098"x.472"



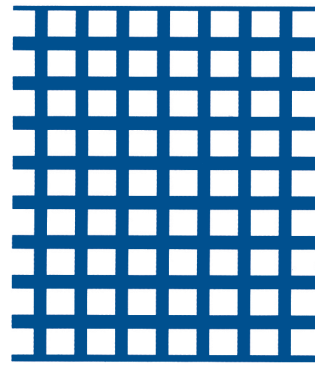
**YL-89** 2x13  
.079"x.512"



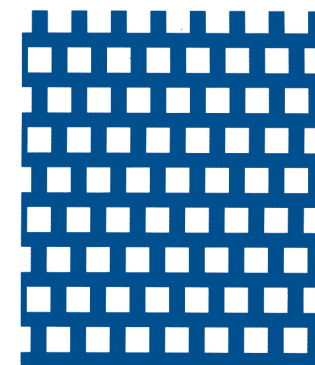
**YL-90** 4x12  
.157"x.472"



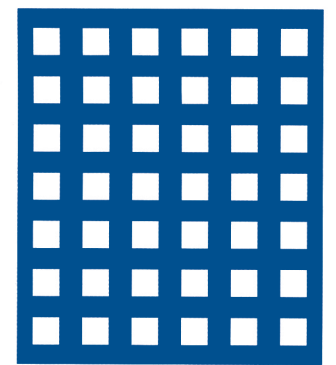
**YL-91** 2.5x20  
.098"x.787"



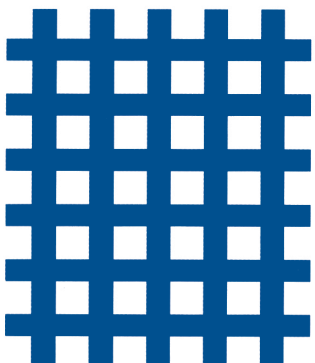
**YL-92** 3□x5P 36% open  
.118"squgre  
.197"centers,



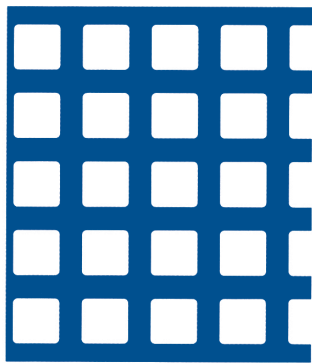
**YL-93** 3□x5P 36% open  
.118"squgre  
.197"centers,



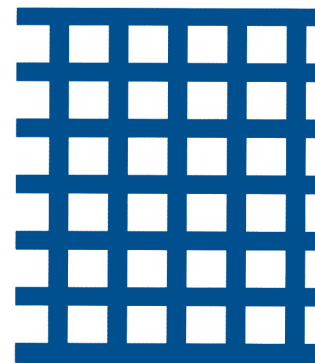
**YL-94** 3.5□x6P 34% open  
.137"squgre  
.276"centers,



**YL-95** 4□x7P 32.7% open  
.157"squgre  
.276"centers,



**YL-96** 6□x9P 44.4% open  
.236"squgre  
.354"centers,



**YL-97** 5□x7.5P 44.4% open  
.197"squgre  
.295"centers,



**YL-98** 2x24  
.079"x.945"  
-42.5% open